



PRO-OFFROAD Bolt-On Style Fender Flares PRO-X-TEND Streamline Style Fender Flares

Installation Instructions - Chevrolet Silverado 1500 2019-2020

Part# 10-1017 (PRO-OFFROAD) / 25-1017 (PRO-X-TEND)

ATTENTIONATTENTION***ATTENTION*** YOU MUST READ THE FOLLOWING POINTS BEFORE PROCEEDING WITH ANY STEP OF INSTALLATION

1. Inspect your fender flares for shipping damage immediately upon receipt. Shipping damage must be reported within 48 hours of receipt.
2. Test fit all flare pieces to your vehicle before beginning any other step to confirm you have received the correct set of fender flares for your application. Ensure that all pieces in the parts list below are present.
3. While professional installation is always recommended, RDJ Trucks fender flares can be installed by handy individuals with the proper tools. However, it is a 2-man job. Attempting to achieve a proper fit on one's own is highly discouraged.
3. Due to the tolerances allowed by the motor companies during the assembly of the vehicles, some adjustments or modifications may be necessary to achieve a proper fit.
4. PAINTING - All inspections and test fittings must be made prior to painting the fender flares. No claim of damage, fitment or other defects/errors may be made after painting has occurred. RDJ Trucks is not liable for any costs incurred from painting and/or associated labor.
5. Most importantly, we know that when it comes to choosing fender flares for your truck, you have a multitude of options. We are extremely grateful that you put your faith in our small company. If you experience any issues or if there is anything we can do to assist you, please don't hesitate to contact us - info@rdjtrucks.com.

PARTS LIST



80#0119LF
LEFT FRONT
FLARE



80#-119RF
RIGHT FRONT
FLARE



80#-0119LR
LEFT REAR
FLARE



80#-0119RR
RIGHT REAR
FLARE



R0300
(360")



T1193
SEAL TOOL



LONG CLIP
12 PCS



TRUSS SCREW
12 PCS



3M
Tape
PLASTIC
CONNECTOR
2 PCS



PLASTIC
FASTENER
2 PCS



SELF-TAPPING
SCREW
8 PCS

FOR PRO-OFFROAD VERSION ONLY



ALLEN BOLT
36 PCS



NYLON NUT
36 PCS

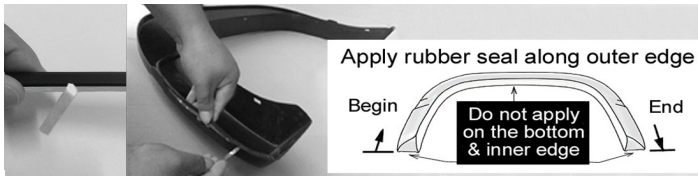


WASHER
36 PCS



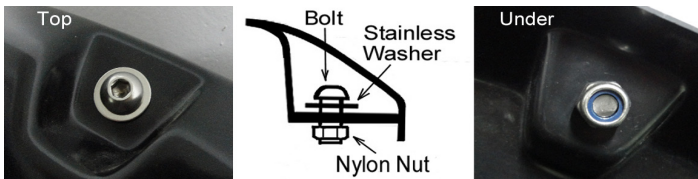
TORX BIT
1 PC

1. RUBBER WEATHER SEAL APPLICATION



1. Thoroughly clean inside top edge of each flare (where the 3M adhesive will touch) with an alcohol based cleaner.
2. Do not peel the red backing off of the 3M adhesive until instructed. Beginning with the first flare, apply the rubber weather seal in roughly 1 foot sections at a time. From the starting end, leave an extra 1 inch of trim off of the end of the flare so that you can grab and peel the red adhesive backing.
3. With roughly 1 foot of trim applied to the edge, peel the red adhesive backing, pulling it out a few inches at a time. At the same time, press trim firmly in place, ensuring that it is securely adhered to the edge of the flare.
4. Continue the same process in 1 foot sections until the trim is firmly adhered to the entire outer edge of the flare. With a razor knife, cut off the excess trim from each end of the flare.
5. Repeat steps for remaining flares.

2. POCKET BOLT APPLICATION



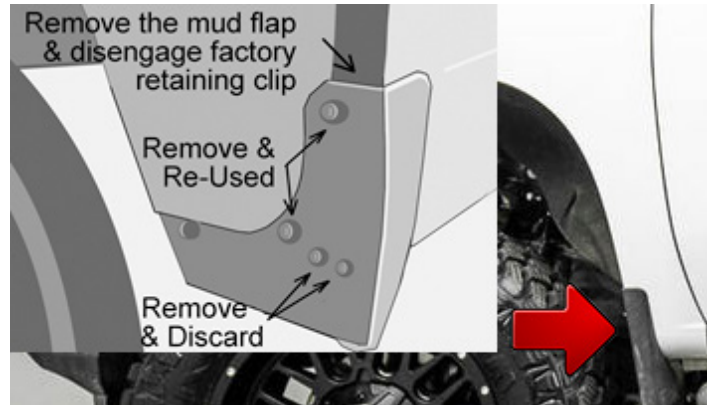
1. Apply washer to allen bolt and insert allen bolt into each pocket hole. *NOTE: Washer should be on the outside of the flare underneath the allen bolt head, NOT on the backside under the nylon nut.
2. Apply nylon nut to allen bolt and tighten carefully. Do not overtighten.
3. Repeat for each pocket.

3. FRONT DRIVER SIDE FLARE



1. Remove 3 existing screws from locations shown and save for later.

4. REMOVE FACTORY MUD FLAP



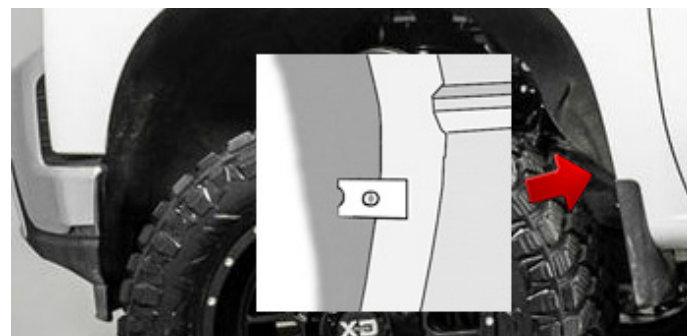
1. Remove top and left fasteners and save for later.
2. Remove lower 2 fasteners and discard.
3. Slightly pull away the top of the mud flap and disengage the factory retaining clip.
4. Remove the mud flap by sliding outwards, directly away from the fender.

5. FRONT DRIVER SIDE FLARE - ALIGN & MARK



1. With a helper, firmly place the LF flare against the fender and align the holes in the flare with the factory holes as shown.
2. Once all holes are properly aligned, use a grease pencil to mark the one hole location in the fender as shown.
3. Remove the flare from the fender.

6. FRONT DRIVER SIDE FLARE - APPLY LONG CLIP



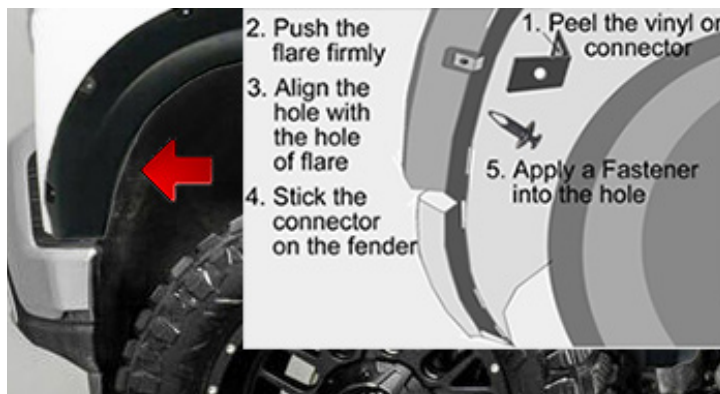
1. Apply one long clip over the lip at the mark made in the previous step.

7. FRONT DRIVER SIDE FLARE - INSTALL



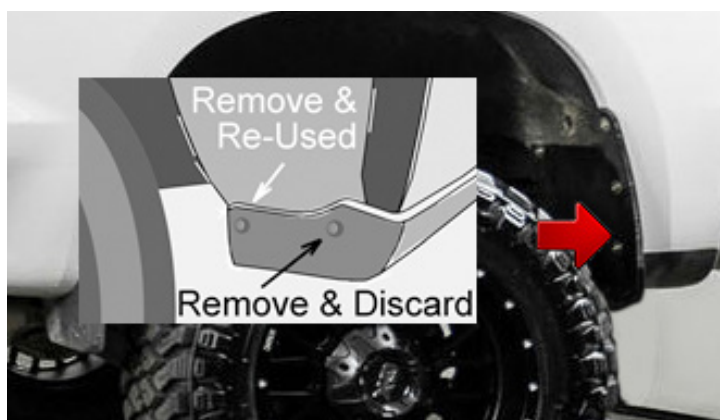
1. With a helper, place the LF flare firmly against the fender.
2. Re-install the original 5 OEM screws removed in steps 3 & 4.
3. Insert one truss screw in the remaining hole as shown.
4. Do not tighten fasteners until the flare is aligned and flush.

8. FRONT DRIVER SIDE FLARE - INSTALL (CONT.)



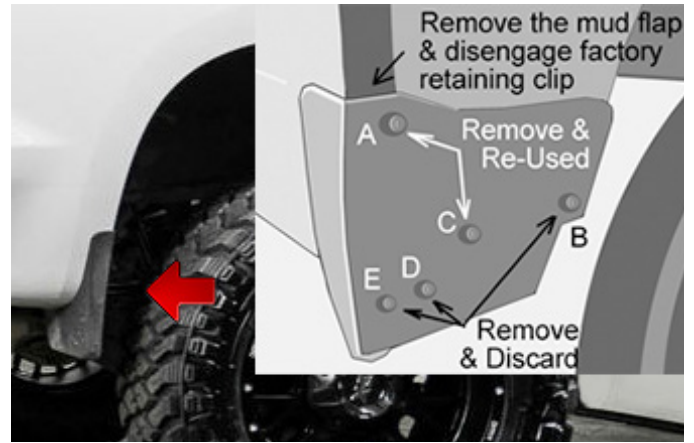
1. Peel the 3M backing on the plastic connector.
2. Firmly press the front of the flare against the fender.
3. Align the connector's hole with the hole in the flare.
4. Stick the connector on to the fender (**clean with alcohol first**)
5. Apply and secure a plastic fastener into the hole.

9. REAR DRIVER SIDE - REAR MUD FLAP REMOVAL



1. Remove the left screw from the rear mud flap and save for later.
2. Remove the right screw from the rear mud flap and discard.
3. Remove the rear mud flap.

10. REAR DRIVER SIDE - FORWARD MUD FLAP



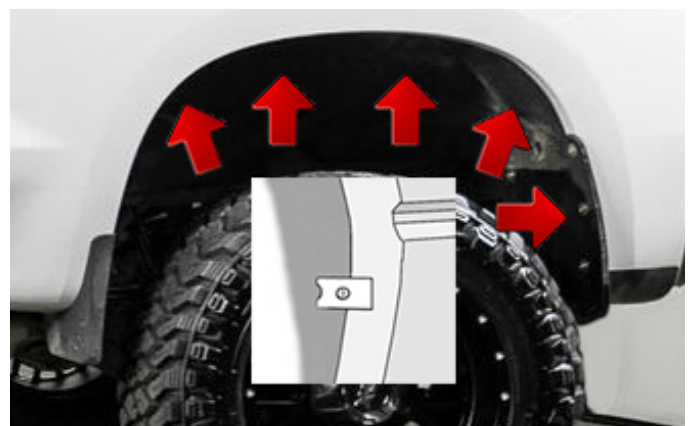
1. From the forward mud flap, remove & retain 2 screws (A, C)
2. Remove & discard 3 screws (B, D, E) from the mud flap.
3. Slightly pull away the top of the mud flap and disengage the factory retaining clip.
4. Remove the mud flap by sliding outwards, directly away from the fender

11. REAR DRIVER SIDE - ALIGN & MARK



1. With a helper, firmly hold the LR flare on the fender, aligning the lower flare holes with the factory holes.
2. Once aligned and firmly flush, mark the 5 hole locations with a grease pencil as shown then remove flare from the fender.

12. REAR DRIVER SIDE - APPLY LONG CLIPS



13. REAR DRIVER SIDE FLARE - INSTALL



1. With a helper, hold flare firmly in the proper position making sure that the top edge is flush against the fender.
2. Insert 5 truss screws through the flare and into the long clips placed in the previous step.
3. Re-install 3 factory screws (A, C) saved from step 10.
4. Repeat steps 3-13 on passenger side.

14. FINAL INSPECTION

1. Due to the tolerances allowed by the motor companies during assembly of the vehicle, adjustments may be necessary to work out any gaps that may occur and ensure a proper, flush fit.
2. Supplied self-tapping screws may be inserted in any location that is in need of additional support. With a helper holding the flare flush against the fender of the truck, insert self-tapping screws through the inner lip of the flare and into fender well wall. Repeat as needed.
3. Check rubber weather seal to ensure a proper seat. Make sure that the top edge of the rubber weather seal is not folded under, behind the flare at any point.
4. If needed, use the supplied seal tool (hooked edge) to properly seat the seal, sliding it along the weather trimmed edge of the flare.



**BE SURE TO FOLLOW US & TAG US IN YOUR PICTURES FOR
A CHANCE TO WIN A 100% REBATE OF YOUR PURCHASE!
A NEW WINNER DRAWN EVERY MONTH!!**



@RDJTRUCKS



@RDJ_TRUCKS

