



PRO-OFFROAD Bolt-On Style Fender Flares PRO-X-TEND Streamline Style Fender Flares

Installation Instructions - Dodge Ram 1500 2009-2018

Part# 10-2010 PRO-OFFROAD Bolt-On Style

Part# 25-2010 PRO-X-TEND Streamline Style

ATTENTIONATTENTION***ATTENTION*** YOU MUST READ THE FOLLOWING POINTS BEFORE PROCEEDING WITH ANY STEP OF INSTALLATION

1. Inspect your fender flares for shipping damage immediately upon receipt. Shipping damage must be reported within 48 hours of receipt.
2. Test fit all flare pieces to your vehicle before beginning any other step to confirm you have received the correct set of fender flares for your application. Ensure that all pieces in the parts list below are present.
3. While professional installation is always recommended, RDJ Trucks fender flares can be installed by handy individuals with the proper tools. However, it is a 2-man job. Attempting to achieve a proper fit on one's own is highly discouraged.
3. Due to the tolerances allowed by the motor companies during the assembly of the vehicles, some adjustments or modifications may be necessary to achieve a proper fit.
4. PAINTING - All inspections and test fittings must be made prior to painting the fender flares. No claim of damage, fitment or other defects/errors may be made after painting has occurred. RDJ Trucks is not liable for any costs incurred from painting and/or associated labor.
5. Most importantly, we know that when it comes to choosing fender flares for your truck, you have a multitude of options. We are extremely grateful that you put your faith in our small company. If you experience any issues or if there is anything we can do to assist you, please don't hesitate to contact us - info@rdjtrucks.com

PARTS LIST



802-0204LF
LEFT FRONT
& INNER PC



802-0204RF
RIGHT FRONT
& INNER PC



802-0204LR
LEFT REAR



802-0204RR
RIGHT REAR



R0300
(324")



U-CLIP
6 PCS



FLANGE
TYPE-A
SCREW
6 PCS



SELF
TAPPING
SCREW
8PCS



T1193
SEAL TOOL



ALLEN BOLT
34 PCS



NYLON NUT
34 PCS

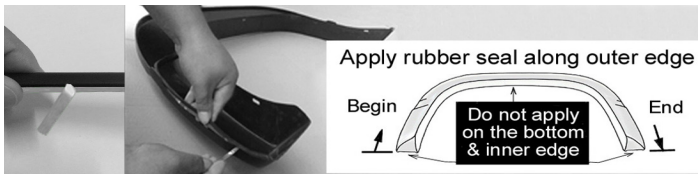


WASHER
34 PCS



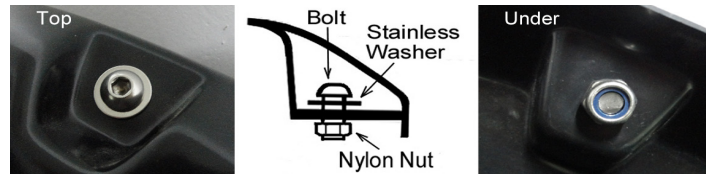
TORX BIT
1 PC

1. RUBBER WEATHER SEAL APPLICATION



1. Thoroughly clean inside top edge of each flare (where the 3M adhesive will touch) with an alcohol based cleaner.
2. Do not peel the red backing off of the 3M adhesive until instructed. Beginning with the first flare, apply the rubber weather seal in roughly 1 foot sections at a time. From the starting end, leave an extra 1 inch of trim off of the end of the flare so that you can grab and peel the red adhesive backing.
3. With roughly 1 foot of trim applied to the edge, peel the red adhesive backing, pulling it out a few inches at a time. At the same time, press trim firmly in place, ensuring that it is securely adhered to the edge of the flare.
4. Continue the same process in 1 foot sections until the trim is firmly adhered to the entire outer edge of the flare. With a razor knife, cut off the excess trim from each end of the flare.
5. Repeat process for remaining flares.

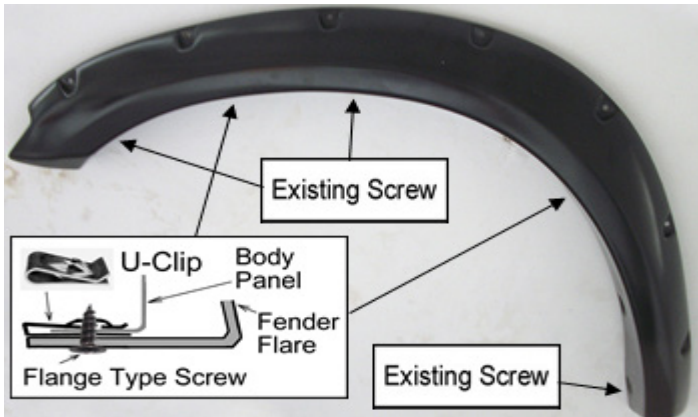
2. POCKET BOLT APPLICATION



*SKIP THIS STEP FOR X-TEND SERIES FLARES

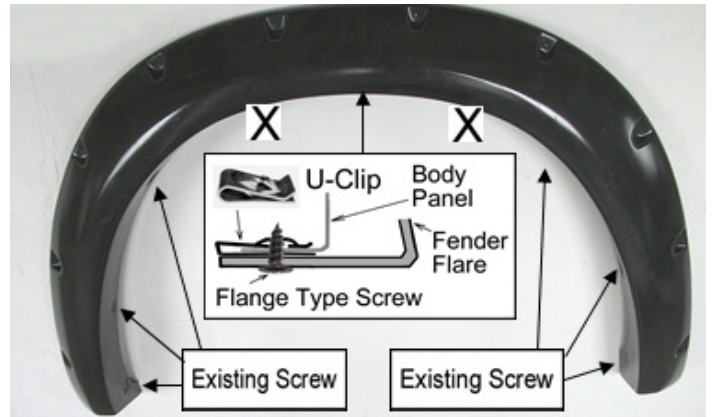
1. Apply washer to allen bolt and insert allen bolt into each pocket hole.
*NOTE: Washer should be on the outside of the flare underneath the allen bolt head, NOT on the backside under the nylon nut.
2. Apply nylon nut to allen bolt and tighten carefully. Do not overtighten.
3. Repeat for each pocket.

3. FRONT FLARE - INSTALLATION (DRIVER)



1. Remove 3 existing screws from the wheel well of the truck and retain for use.
2. Apply 2 U-clips over the existing holes in the fender lip as shown.
3. With a helper, place the flare on the truck, aligning the existing holes in the flare with the U-clips on the fender lip. Hold firmly in place and insert the flange type-A screws through the flare and into the U-clips.
4. Insert the original screws from step 1 through the additional 3 holes in the flare lip and back into the factory locations.
5. Some adjustments may be needed to properly align the flare. Once proper fit is achieved, tighten all screws and repeat on passenger side.

4. REAR FLARE - INSTALLATION (DRIVER)



1. Remove 6 existing screws from the wheel well of the truck and retain for use. Do not remove 2 top center screws as shown with "X".
2. Apply 1 U-clip over the existing hole in the fender lip as shown.
3. With a helper, place the flare on the truck, aligning the existing hole in the flare with the U-clip on the fender lip. Hold firmly in place and insert the flange type-A screw through the flare and into the U-clip.
4. Insert the original screws from step 1 through the additional 6 holes in the flare lip and back into the factory locations.
5. Some adjustments may be needed to properly align the flare. Once proper fit is achieved, tighten all screws and repeat on the passenger side.

5. FINAL INSPECTION

1. Due to the tolerances allowed by the motor companies during assembly of the vehicle, adjustments may be necessary to work out any gaps that may occur and ensure a proper, flush fit.
2. Supplied self-tapping screws may be inserted in any location that is in need of additional support. With a helper holding the flare flush against the fender of the truck, insert self-tapping screws through the inner lip of the flare and into fender well wall. Repeat as needed.
3. Check rubber weather seal to ensure a proper seat. Make sure that the top edge of the rubber weather seal is not folded under, behind the flare at any point. If necessary, use the seal tool properly seat the rubber weather seal.



DON'T FORGET

**ABOUT OUR TRAVEL-PRO
65-SERIES TONNEAU COVERS**

**TRI-FOLDING HARD-FLIP STYLE
INSTALL AND REMOVE IN LESS THAN 5 MINUTES!**



FOLLOW US & WIN!!

**BE SURE TO FOLLOW US & TAG US IN YOUR PICTURES FOR
A CHANCE TO WIN A 100% REBATE OF YOUR PURCHASE!
A NEW WINNER DRAWN EVERY MONTH!!**



@RDJ_TRUCKS



@RDJTRUCKS