



RDJ Trucks PRO-OFFROAD Bolt-On Style Fender Flares RDJ Trucks PRO-X-TEND Style Fender Flares

Installation Instructions - Ford F250/F350 SuperDuty 2017-2020

Part# **10-3018** PRO-OFFROAD Bolt-On Style

Part# **25-3018** PRO-X-TEND Streamline Style

*****ATTENTION***ATTENTION***ATTENTION*** YOU MUST READ THE FOLLOWING POINTS BEFORE PROCEEDING WITH ANY STEP OF INSTALLATION**

1. Inspect your fender flares for shipping damage immediately upon receipt. Shipping damage must be reported within 48 hours of receipt.
2. Test fit all flare pieces to your vehicle before beginning any other step to confirm you have received the correct set of fender flares for your application. Ensure that all pieces in the parts list below are present.
3. While professional installation is always recommended, RDJ Trucks fender flares can be installed by handy individuals with the proper tools. However, it is a 2-man job. Attempting to achieve a proper fit on one's own is highly discouraged.
3. Due to the tolerances allowed by the motor companies during the assembly of the vehicles, some adjustments or modifications may be necessary to achieve a proper fit.
4. PAINTING - All inspections and test fittings must be made prior to painting the fender flares. No claim of damage, fitment or other defects/errors may be made after painting has occurred. RDJ Trucks is not liable for any costs incurred from painting and/or associated labor.
5. Most importantly, we know that when it comes to choosing fender flares for your truck, you have a multitude of options. We are extremely grateful that you put your faith in our small company. If you experience any issues or if there is anything we can do to assist you, please don't hesitate to contact us - info@rdjtrucks.com

PARTS LIST



80#-0316LF
LEFT FRONT
& INNER PC



80#-0316RF
RIGHT FRONT
& INNER PC



80#-0316LR
LEFT REAR



80#0316RR
RIGHT REAR



R0300
(338")



U-CLIP &
FLANGE
TYPE-A SCREW
6 PCS EA



LONG CLIP &
TRUSS TYPE-A
SCREW
8 PCS EA



S-CLIP & TRUSS
MACHINE
SCREW
2 PCS EA



PLASTIC
FASTENER
2 PCS



SELF
TAPPING
SCREW
8PCS



ALLEN BOLT
34 PCS



NYLON NUT
34 PCS



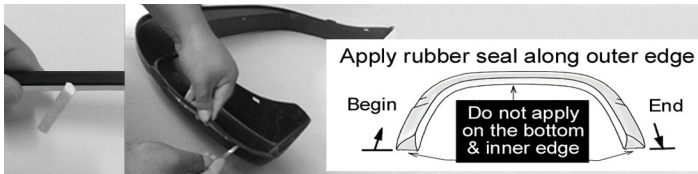
WASHER
34 PCS



TORX BIT
1 PC

*****POCKET HARDWARE NOT INCLUDED WITH***
PRO-X-TEND SERIES FLARES**

1. RUBBER WEATHER SEAL APPLICATION



1. Thoroughly clean inside top edge of each flare (where the 3M adhesive will touch) with an alcohol based cleaner.
2. Do not peel the red backing off of the 3M adhesive until instructed. Beginning with the first flare, apply the rubber weather seal in roughly 1 foot sections at a time. From the starting end, leave an extra 1 inch of trim off of the end of the flare so that you can grab and peel the red adhesive backing.
3. With roughly 1 foot of trim applied to the edge, peel the red adhesive backing, pulling it out a few inches at a time. At the same time, press trim firmly in place, ensuring that it is securely adhered to the edge of the flare.
4. Continue the same process in 1 foot sections until the trim is firmly adhered to the entire outer edge of the flare. With a razor knife, cut off the excess trim from each end of the flare.
5. Repeat process for remaining flares.

3. FRONT FLARE - INSTALLATION (DRIVER)



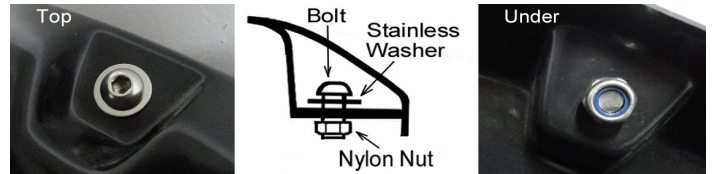
1. Remove the 6 existing factory screws and save for re-installation as shown. **OEM flares (if equipped) must be removed before continuing with installation.

5. FRONT FLARE - INSTALLATION (DRIVER)



1. Line up the driver side (LF) inner bracket as shown with the forward-most 4 factory holes and insert the original factory screws removed in step 3, securing the inner bracket to the fender well.

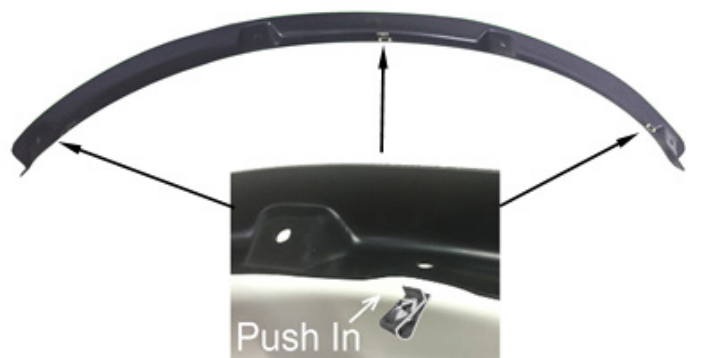
2. POCKET BOLT APPLICATION



*SKIP THIS STEP FOR PRO-X-TEND STREAMLINE SERIES FLARES

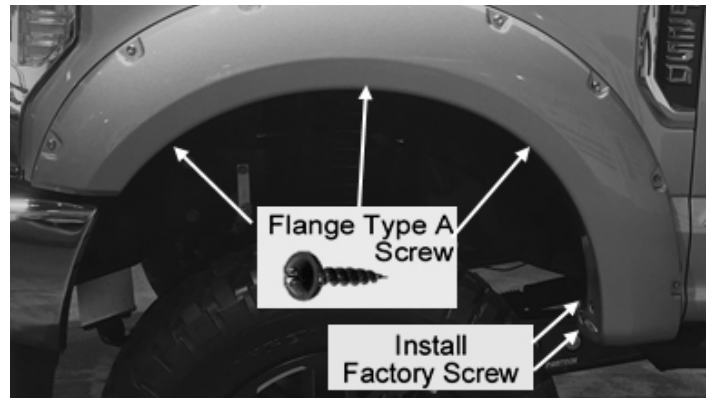
1. Apply washer to allen bolt and insert allen bolt into each pocket hole. *NOTE: Washer should be on the outside of the flare underneath the allen bolt head, NOT on the backside under the nylon nut.
2. Apply nylon nut to allen bolt and tighten carefully. Do not overtighten.
3. Repeat for each pocket.

4. FRONT FLARE - INSTALLATION (DRIVER) - CONT.



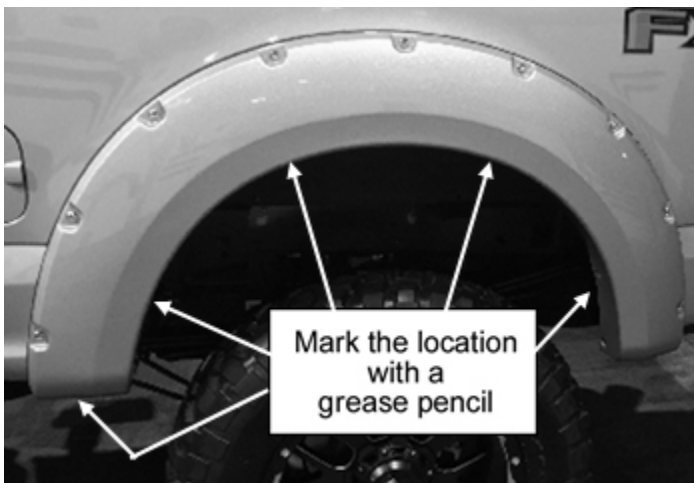
1. Locate the driver side (left) inner bracket.
2. Place 3 U-clips over the holes in the positions shown with the flat side of the U-clips facing downward.

6. FRONT FLARE - INSTALLATION (DRIVER) - CONT.



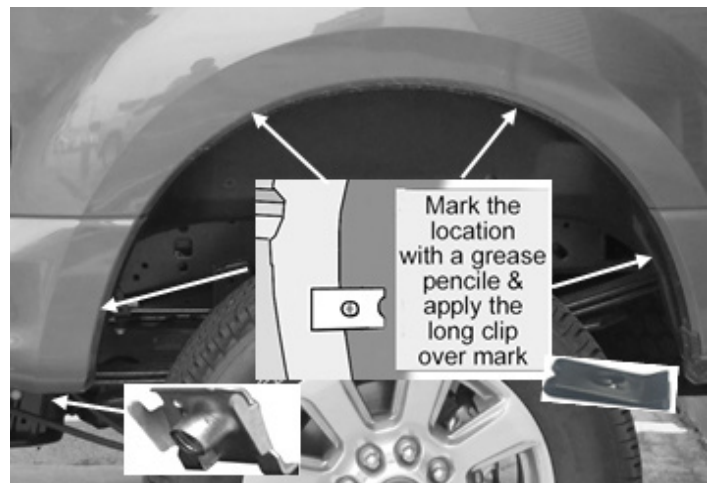
1. With a helper, align the driver front (LF) flare on the fender, holding firmly in position.
2. Insert 3 flange type-A screws through the holes in the flare and into the U-clips on the inner bracket. Insert 2 remaining factory screws into the rear-most holes in the flare, securing it to the fender.

7. REAR FLARE - INSTALLATION (DRIVER)



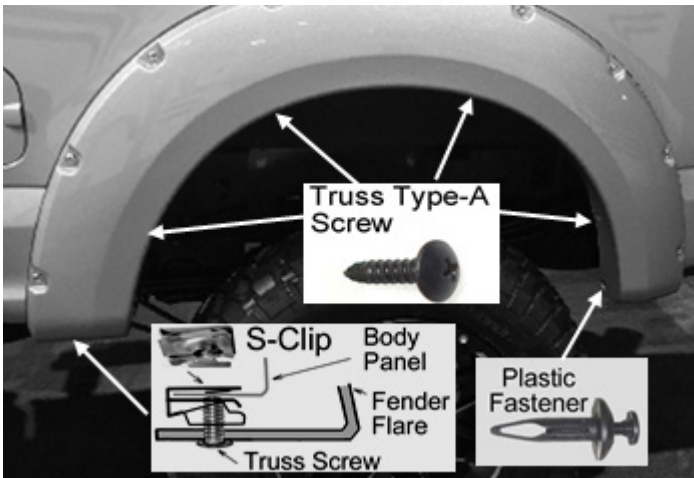
1. With a helper, firmly hold the driver rear flare (LR) in place on the fender, and mark the five hole locations with a grease pencil.
2. Remove the flare from the truck.

8. REAR FLARE - INSTALLATION (DRIVER) - CONT.



1. Apply 4 long clips over the fender lip at the 4 marked locations shown above from. The flat side should face upward and the bent side with threaded hole should face downward.
2. Apply 1 S-clip over the forward lower mark as shown above, bottom left. Again, the flat should face upward and the threaded screw hole side should face downward.

9. REAR FLARE - INSTALLATION (DRIVER) - CONT.



1. With a helper, firmly hold the driver rear flare (LR) in place on the fender, aligning the holes.
2. Insert 4 truss type-A screws through the flare and into the long clips on the fender lip as shown top center.
3. Insert 1 truss machine screw through the flare and into the S-clip as shown bottom left.
4. Insert 1 plastic fastener through the flare and into the factory hole as shown bottom right. You may need to remove a factory fastener from this hole.

10. PASSENGER SIDE.

1. Repeat steps 3-9 on the passenger side of the truck.

11. FINAL INSPECTION

1. Due to the tolerances allowed by the motor companies during assembly of the vehicle, adjustments may be necessary to work out any gaps that may occur and ensure a proper, flush fit.
2. Supplied self-tapping screws may be inserted in any location that is in need of additional support. With a helper holding the flare flush against the fender of the truck, insert self-tapping screws through the inner lip of the flare and into fender well wall. Repeat as needed.
3. Check rubber weather seal to ensure a proper seat. Make sure that the top edge of the rubber weather seal is not folded under, behind the flare at any point. If necessary, use the seal tool properly seat the rubber weather seal.

FOLLOW US & WIN!!

BE SURE TO FOLLOW US & TAG US IN YOUR PICTURES FOR
A CHANCE TO WIN A 100% REBATE OF YOUR PURCHASE!
A NEW WINNER DRAWN EVERY MONTH!!



@RDJ_TRUCKS



@RDJTRUCKS



DON'T FORGET **ABOUT OUR TRAVEL-PRO 65-SERIES TONNEAU COVERS**

**TRI-FOLDING HARD FLIP STYLE
INSTALL AND REMOVE IN LESS THAN 5 MINUTES!**

