



RDJ Trucks PRO-OFFROAD Bolt-On Style Fender Flares RDJ Trucks PRO-X-TEND Streamline Style Fender Flares

Installation Instructions - GMC Sierra 1500 2007-2013 5.8' Bed

Part# 10-4015 PRO-OFFROAD Series

Part# 25-4015 PRO-X-TEND Series

ATTENTIONATTENTION***ATTENTION*** YOU MUST READ THE FOLLOWING POINTS BEFORE PROCEEDING WITH ANY STEP OF INSTALLATION

1. Inspect your fender flares for shipping damage immediately upon receipt. Shipping damage must be reported within 48 hours of receipt.
2. Test fit all flare pieces to your vehicle before beginning any other step to confirm you have received the correct set of fender flares for your application. Ensure that all pieces in the parts list below are present.
3. While professional installation is always recommended, RDJ Trucks fender flares can be installed by handy individuals with the proper tools. However, it is a 2-man job. Attempting to achieve a proper fit on one's own is highly discouraged.
3. Due to the tolerances allowed by the motor companies during the assembly of the vehicles, some adjustments or modifications may be necessary to achieve a proper fit.
4. PAINTING - All inspections and test fittings must be made prior to painting the fender flares. No claim of damage, fitment or other defects/errors may be made after painting has occurred. RDJ Trucks is not liable for any costs incurred from painting and/or associated labor.
5. Most importantly, we know that when it comes to choosing fender flares for your truck, you have a multitude of options. We are extremely grateful that you put your faith in our small company. If you experience any issues or if there is anything we can do to assist you, please don't hesitate to contact us - info@rdjtrucks.com

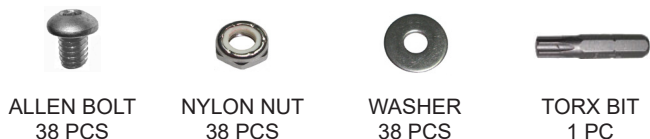
PARTS LIST



LEFT FRONT FLARE RIGHT FRONT FLARE LEFT REAR FLARE RIGHT REAR FLARE R0300 (324")



U-CLIP 4 PCS FLANGE TYPE-A SCREW 4 PCS S-CLIP 12 PCS TRUSS MACHINE SCREW 12 PCS SELF TAPPING SCREW 8PCS



ALLEN BOLT 38 PCS NYLON NUT 38 PCS WASHER 38 PCS TORX BIT 1 PC

POCKET HARDWARE NOT INCLUDED WITH
PRO-X-TEND SERIES FLARES

FOLLOW US & WIN!

**BE SURE TO FOLLOW US & TAG US IN YOUR PICTURES FOR
A CHANCE TO WIN A 100% REBATE OF YOUR PURCHASE!
A NEW WINNER DRAWN EVERY MONTH!!**

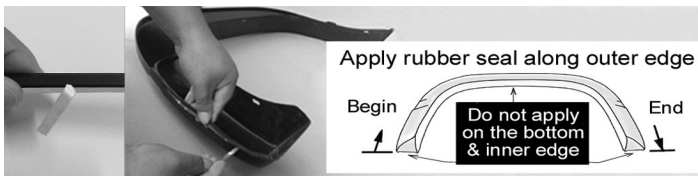


@RDJ_TRUCKS



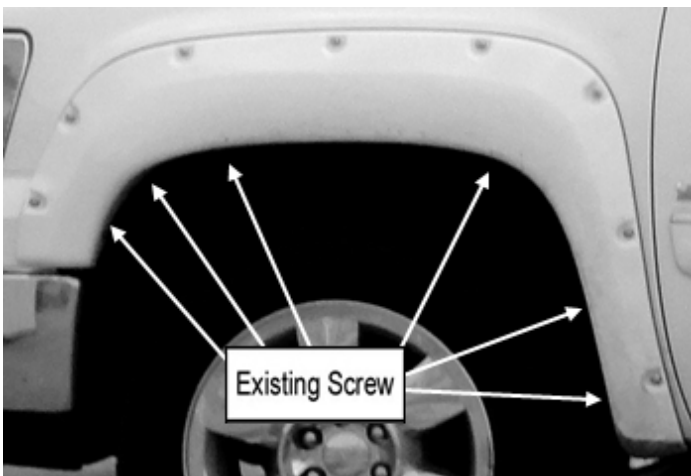
@RDJTRUCKS

1. RUBBER WEATHER SEAL APPLICATION



1. Thoroughly clean inside top edge of each flare (where the 3M adhesive will touch) with an alcohol based cleaner.
2. Do not peel the red backing off of the 3M adhesive until instructed. Beginning with the first flare, apply the rubber weather seal in roughly 1 foot sections at a time. From the starting end, leave an extra 1 inch of trim off of the end of the flare so that you can grab and peel the red adhesive backing.
3. With roughly 1 foot of trim applied to the edge, peel the red adhesive backing, pulling it out a few inches at a time. At the same time, press trim firmly in place, ensuring that it is securely adhered to the edge of the flare.
4. Continue the same process in 1 foot sections until the trim is firmly adhered to the entire outer edge of the flare. With a razor knife, cut off the excess trim from each end of the flare.
5. Repeat process for remaining flares.

3. FRONT FLARE - INSTALLATION (DRIVER)

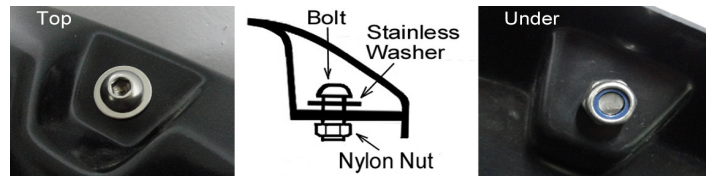


1. Remove 6 existing factory screws from the fender well of the truck.
2. With a helper, place the flare firmly in position on the fender.
3. Re-install the 6 factory screws through the flare and into the original holes in the fender well. Do not fully tighten until the flare is properly aligned and flush against the fender. Slight adjustments may be required to get a firm, flush fit.
4. Repeat for passenger side.

5. FINAL INSPECTION

1. Due to the tolerances allowed by the motor companies during assembly of the vehicle, adjustments may be necessary to work out any gaps that may occur and ensure a proper, flush fit.
2. Supplied self-tapping screws may be inserted in any location that is in need of additional support. With a helper holding the flare flush against the fender of the truck, insert self-tapping screws through the inner lip of the flare and into fender well wall. Repeat as needed.
3. Check rubber weather seal to ensure a proper seat. Make sure that the top edge of the rubber weather seal is not folded under, behind the flare at any point. If necessary, use the seal tool to properly seat the rubber weather seal.

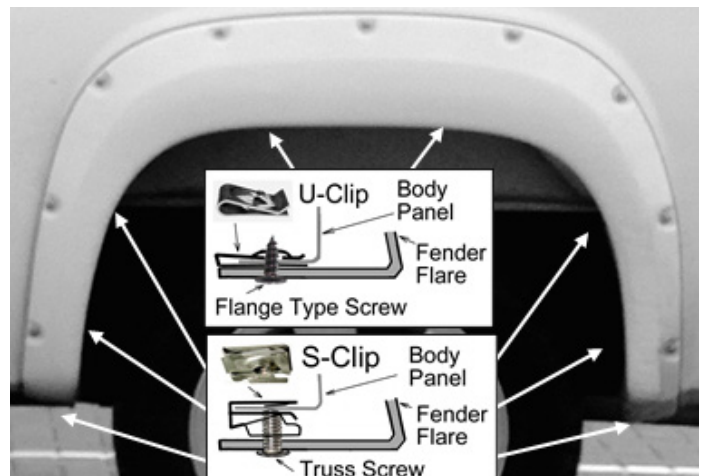
2. POCKET BOLT APPLICATION



*SKIP THIS STEP FOR PRO-X-TEND SERIES FLARES

1. Apply washer to allen bolt and insert allen bolt into each pocket hole.
*NOTE: Washer should be on the outside of the flare underneath the allen bolt head, NOT on the backside under the nylon nut.
2. Apply nylon nut to allen bolt and tighten carefully. Do not overtighten.
3. Repeat for each pocket.

4. REAR FLARE - INSTALLATION (DRIVER)



1. With a helper, hold the flare flush against the fender of the truck in the proper position
2. Use a grease pencil to mark the eight hole locations.
3. Apply 2 U-clips over the 2 top marks, aligning with the mounting holes in the flare.
4. Apply 6 S-clips over the 6 lower marks, aligning with the mounting holes in the flare.
6. Secure 2 Flange Type-A screws into the upper 2 U-clips and secure 6 Truss Machine screws into the 6 S-clips.
7. Repeat for passenger side.