



RDJ Trucks PRO-OFFROAD Bolt-On Style Fender Flares RDJ Trucks PRO-X-TEND Streamline Style Fender Flares

Installation Instructions - GMC Sierra 1500 2019-2020

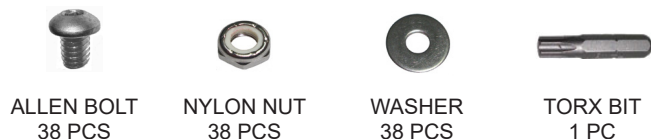
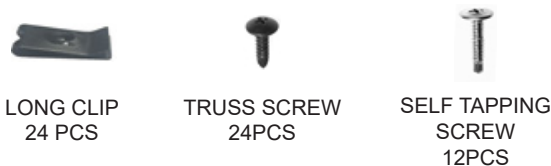
Part# **10-4019** PRO-OFFROAD Series

Part# **25-4019** PRO-X-TEND Series

ATTENTIONATTENTION***ATTENTION*** YOU MUST READ THE FOLLOWING POINTS BEFORE PROCEEDING WITH ANY STEP OF INSTALLATION

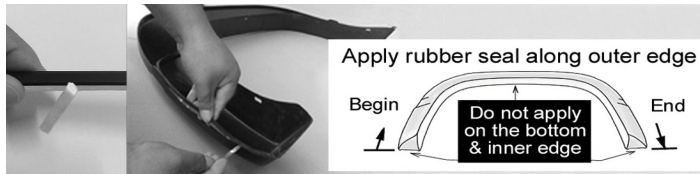
1. Inspect your fender flares for shipping damage immediately upon receipt. Shipping damage must be reported within 48 hours of receipt.
2. Test fit all flare pieces to your vehicle before beginning any other step to confirm you have received the correct set of fender flares for your application. Ensure that all pieces in the parts list below are present.
3. While professional installation is always recommended, RDJ Trucks fender flares can be installed by handy individuals with the proper tools. However, it is a 2-man job. Attempting to achieve a proper fit on one's own is highly discouraged.
3. Due to the tolerances allowed by the motor companies during the assembly of the vehicles, some adjustments or modifications may be necessary to achieve a proper fit.
4. PAINTING - All inspections and test fittings must be made prior to painting the fender flares. No claim of damage, fitment or other defects/errors may be made after painting has occurred. RDJ Trucks is not liable for any costs incurred from painting and/or associated labor.
5. Most importantly, we know that when it comes to choosing fender flares for your truck, you have a multitude of options. We are extremely grateful that you put your faith in our small company. If you experience any issues or if there is anything we can do to assist you, please don't hesitate to contact us - info@rdjtrucks.com

PARTS LIST



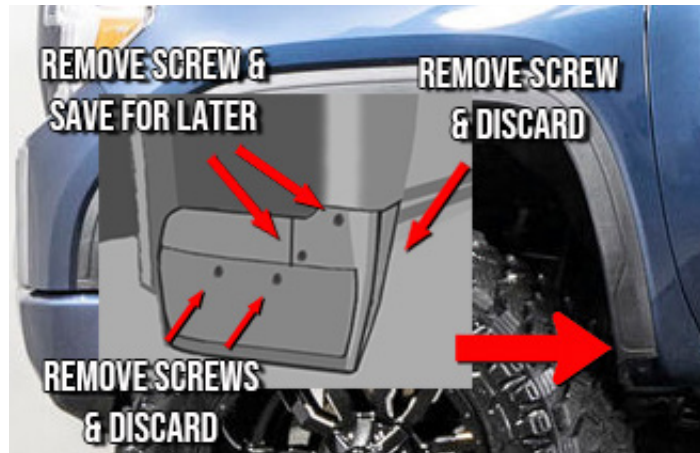
POCKET HARDWARE NOT INCLUDED WITH
PRO-X-TEND SERIES FLARES

1. RUBBER WEATHER SEAL APPLICATION



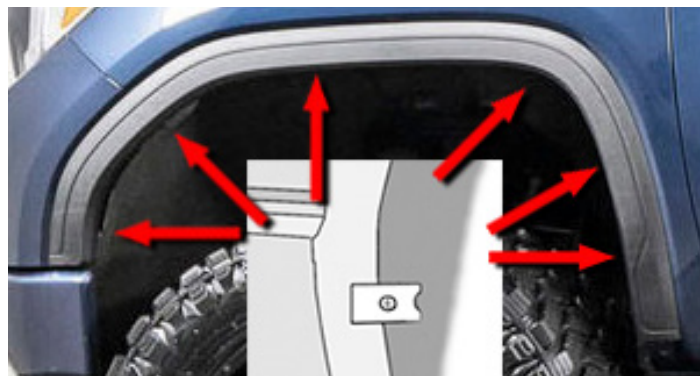
1. Thoroughly clean inside top edge of each flare (where the 3M adhesive will touch) with an alcohol based cleaner.
2. Do not peel the red backing off of the 3M adhesive until instructed. Beginning with the first flare, apply the rubber weather seal in roughly 1 foot sections at a time. From the starting end, leave an extra 1 inch of trim off of the end of the flare so that you can grab and peel the red adhesive backing.
3. With roughly 1 foot of trim applied to the edge, peel the red adhesive backing, pulling it out a few inches at a time. At the same time, press trim firmly in place, ensuring that it is securely adhered to the edge of the flare.
4. Continue the same process in 1 foot sections until the trim is firmly adhered to the entire outer edge of the flare. With a razor knife, cut off the excess trim from each end of the flare.
5. Repeat process for remaining flares.

3. FRONT FLARE - INSTALLATION (DRIVER)



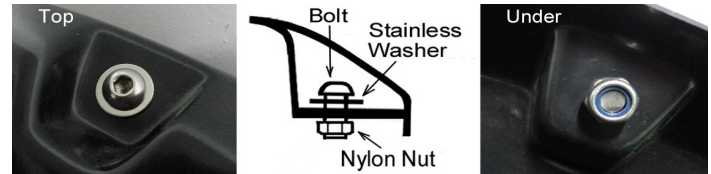
1. Turn the front tire outward for easier access to the splash guard (if equipped)
2. Using a T-15 torx bit, remove the splash guard and retain the two upper screws as shown top left - save for re-installation.

5. FRONT FLARE - INSTALLATION (DRIVER) - CONT.



1. Apply 6 long clips over the fender lip at the marked locations.

2. POCKET BOLT APPLICATION



*SKIP THIS STEP FOR PRO-X-TEND SERIES FLARES

1. Apply washer to allen bolt and insert allen bolt into each pocket hole.
*NOTE: Washer should be on the outside of the flare underneath the allen bolt head, NOT on the backside under the nylon nut.
2. Apply nylon nut to allen bolt and tighten carefully. Do not overtighten.
3. Repeat for each pocket.

4. FRONT FLARE - INSTALLATION (DRIVER) - CONT.



1. With a helper, hold the flare firmly in position on the fender making sure that it is flush.
2. Use a grease pencil to mark the 6 hole locations and then remove the flare from the vehicle.

6. FRONT FLARE - INSTALLATION (DRIVER) - CONT.



1. With a helper, firmly hold the flare in place on the fender, confirming that the 6 holes align with the 6 clips placed in the previous step.
2. Insert 6 truss screws through the holes in the flare and into the clips.
3. Re-install the two factory screws removed in step 3.

7. REAR FLARE - INSTALLATION (DRIVER)



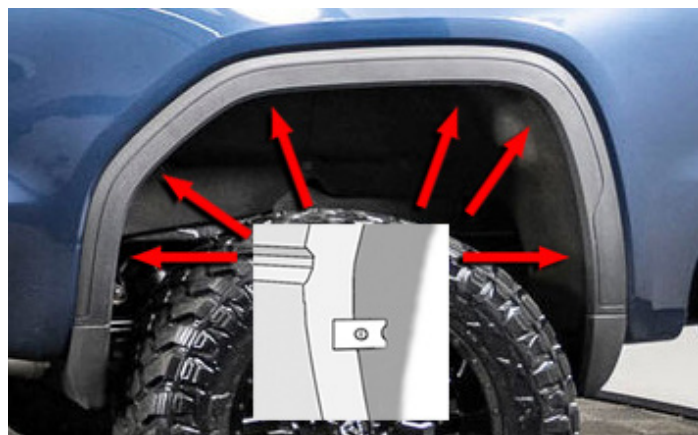
1. If equipped, remove factory splash guards using a T-15 torx bit.

8. REAR FLARE - INSTALLATION (DRIVER) - CONT.



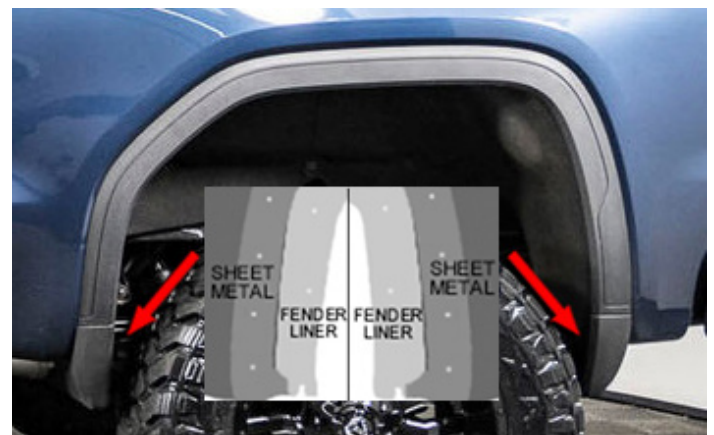
1. With a helper, place the flare on the fender firmly in the proper position and use a grease pencil mark the 6 hole locations
2. Remove the flare from the vehicle.

9. REAR FLARE - INSTALLATION (DRIVER) - CONT.



1. Apply 6 long clips over the fender lip at the marked locations

10. REAR FLARE - INSTALLATION (DRIVER) - CONT.



1. Tuck the fender liner behind the sheet metal flange at the bottom of both sides of the fender well.

11. REAR FLARE - INSTALLATION (DRIVER) - CONT.



1. With a helper, firmly hold the flare in place on the fender, confirming that the 6 holes align with the 6 clips placed in step 9.
2. Insert 6 truss screws through the holes in the flare and into the clips.
3. Apply two self-tapping screws through the flare and into the sheet metal flange at the bottom of both sides of the fender well.

Repeat steps 3-11 for the passenger side and proceed to step 12 for final inspection.

12. FINAL INSPECTION

1. Due to the tolerances allowed by the motor companies during assembly of the vehicle, adjustments may be necessary to work out any gaps that may occur and ensure a proper, flush fit.
2. Supplied self-tapping screws may be inserted in any location that is in need of additional support. With a helper holding the flare flush against the fender of the truck, insert self-tapping screws through the inner lip of the flare and into fender well wall. Repeat as needed.
3. Check rubber weather seal to ensure a proper seat. Make sure that the top edge of the rubber weather seal is not folded under, behind the flare at any point. If necessary, use the seal tool properly seat the rubber weather seal.



DON'T FORGET
ABOUT OUR TRAVEL-PRO
65-SERIES TONNEAU COVERS

WWW.RDJTRUCKS.COM

TRI-FOLDING HARD FLIP STYLE
INSTALL AND REMOVE IN LESS THAN 5 MINUTES!



FOLLOW US & WIN!!

**BE SURE TO FOLLOW US & TAG US IN YOUR PICTURES FOR
A CHANCE TO WIN A 100% REBATE OF YOUR PURCHASE!
A NEW WINNER DRAWN EVERY MONTH!!**



@RDJ_TRUCKS



@RDJTRUCKS