



# RDJ Trucks PRO-OFFROAD Bolt-On Style Fender Flares

Installation Instructions - Toyota Tacoma 2005-2011 w/6ft Bed

Part# 10-6011S (Smooth OE Black Finish)

Part# 10-6011T (Aggressive Textured Black Finish)

## \*\*\*ATTENTION\*\*\*ATTENTION\*\*\*ATTENTION\*\*\* YOU MUST READ THE FOLLOWING POINTS BEFORE PROCEEDING WITH ANY STEP OF INSTALLATION

1. Inspect your fender flares for shipping damage immediately upon receipt. Shipping damage must be reported within 48 hours of receipt.
2. Test fit all flare pieces to your vehicle before beginning any other step to confirm you have received the correct set of fender flares for your application. Ensure that all pieces in the parts list below are present.
3. While professional installation is always recommended, RDJ Trucks fender flares can be installed by handy individuals with the proper tools. However, it is a 2-man job. Attempting to achieve a proper fit on one's own is highly discouraged.
3. Due to the tolerances allowed by the motor companies during the assembly of the vehicles, some adjustments or modifications may be necessary to achieve a proper fit.
4. PAINTING - All inspections and test fittings must be made prior to painting the fender flares. No claim of damage, fitment or other defects/errors may be made after painting has occurred. RDJ Trucks is not liable for any costs incurred from painting and/or associated labor.
5. **\*\*\*2005-2011 TACOMA** - Pocket bolts installed on the outer perimeter of the fender flares are for decoration only and are NOT used in mounting the fender flares to the vehicle. The existing holes in the fenders of your Tacoma are NOT used in installation. The pocket holes in the fender flares are NOT intended to line up to the existing holes in your fenders. The decorative pocket bolts are NOT intended to reach through the existing holes and are supposed to stop short of reaching the fenders of the truck.

### PARTS LIST



802-0906LF  
LEFT FRONT



802-0906RF  
RIGHT FRONT



802-0906LR  
LEFT REAR



802-0906RR  
RIGHT REAR



R0300  
(324")



T1193  
SEAL TOOL



S-CLIP &  
MACHINE  
SCREW  
8 PCS



HEX SCREW  
& NUT  
4 PCS



SMALL  
WASHER  
6 PCS



TRUSS  
SCREW  
20MM  
2 PCS



TRUSS  
SCREW  
50MM  
4 PCS



SPACER  
6.5MM  
19MM  
2 PCS EA



SPACER  
26MM  
2 PCS



SELF  
TAPPING  
SCREW  
8 PCS



ALLEN BOLT  
42 PCS



NYLON NUT  
42 PCS

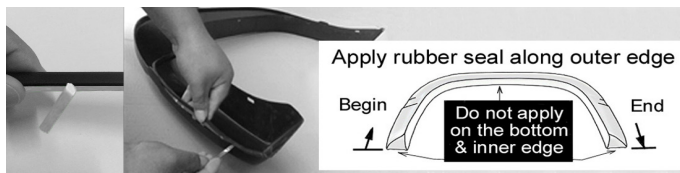


WASHER  
42 PCS



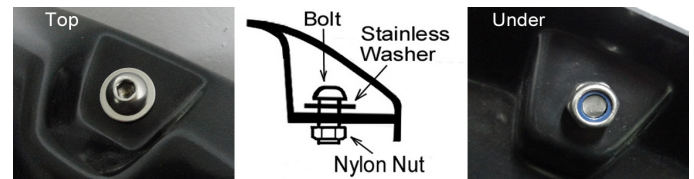
TORX BIT  
1 PC

## 1. RUBBER WEATHER SEAL APPLICATION



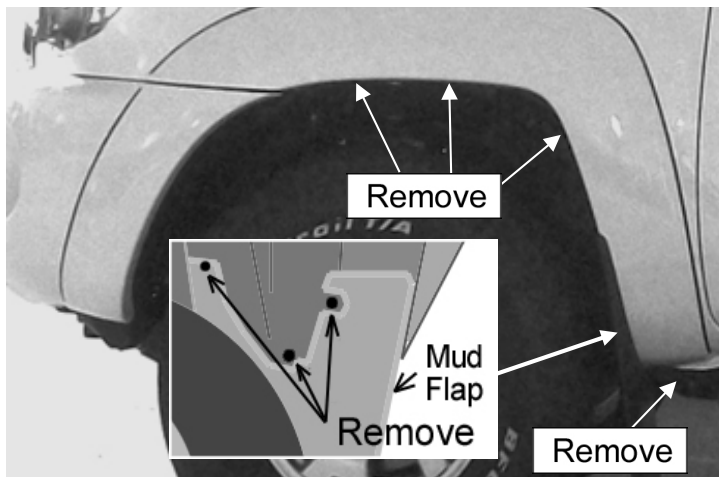
1. Thoroughly clean inside top edge of each flare (where the 3M adhesive will touch) with an alcohol based cleaner.
2. Do not peel the red backing off of the 3M adhesive until instructed. Beginning with the first flare, apply the rubber weather seal in roughly 1 foot sections at a time. From the starting end, leave an extra 1 inch of trim off of the end of the flare so that you can grab and peel the red adhesive backing.
3. With roughly 1 foot of trim applied to the edge, peel the red adhesive backing, pulling it out a few inches at a time. At the same time, press trim firmly in place, ensuring that it is securely adhered to the edge of the flare.
4. Continue the same process in 1 foot sections until the trim is firmly adhered to the entire outer edge of the flare. With a razor knife, cut off the excess trim from each end of the flare.
5. Repeat process for remaining flares.

## 2. POCKET BOLT APPLICATION



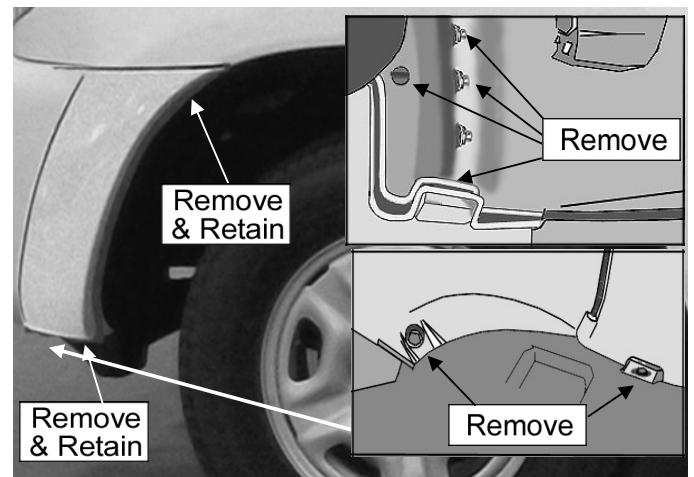
1. Apply washer to allen bolt and insert allen bolt into each pocket hole. \*NOTE: Washer should be on the outside of the flare underneath the allen bolt head, NOT on the backside under the nylon nut.
2. Apply nylon nut to allen bolt and tighten carefully. Do not overtighten.
3. Repeat for each pocket.

## 3. FRONT FLARE - OE FLARE REMOVAL (DRIVER)



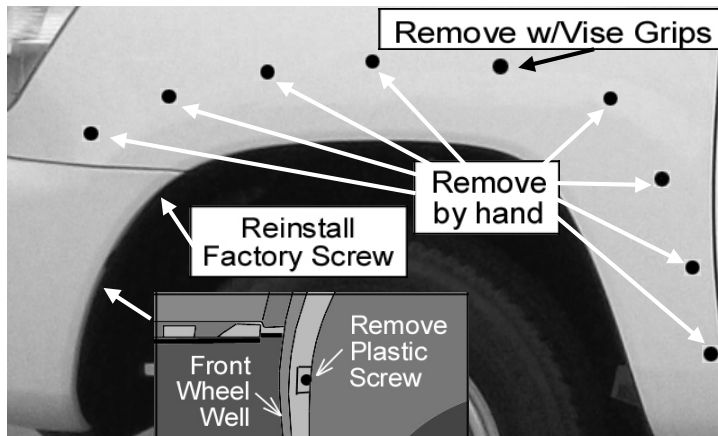
1. Remove 3 existing screws from the mud flap. Save screws for re-installation (See diagram).
2. Remove 3 existing screws from the top of the flare lip and 1 screw from the bottom. Save screws for re-installation.
3. Pull main OE flare away from the vehicle.

## 4. FRONT FLARE - OE BUMPER FLARE REMOVAL



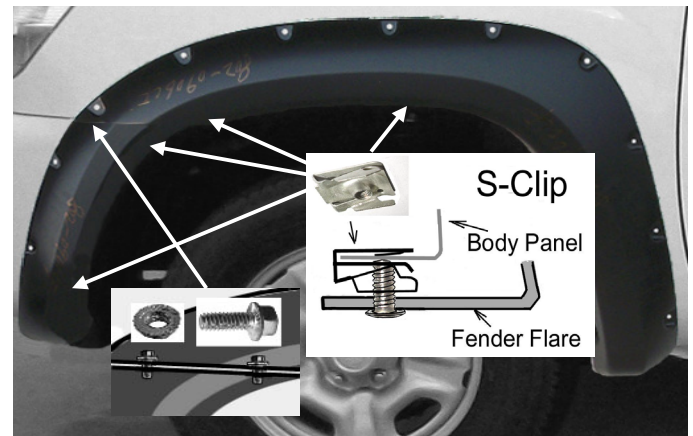
1. Remove 2 existing screws from OE bumper flare and save for re-installation.
2. Remove 2 existing screws from underneath the OE bumper cover. Pull down the bumper cover and splash shield. Save screw for re-installation.
3. Remove 5 existing plastic clips from the inside of the OE bumper cover.
4. Pull the bumper flare away from the vehicle.

## 5. FRONT FLARE - EXISTING HARDWARE REMOVAL



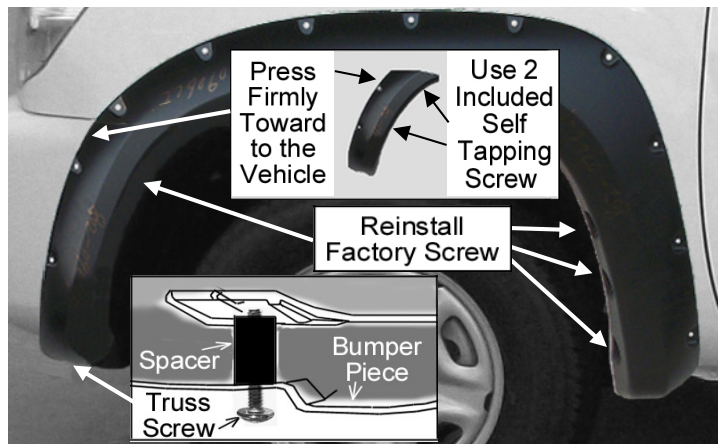
1. Re-install top OE screw from previous step.
2. Remove 8 OE clips in the fender by hand.
3. Remove 1 OE clip with vise grips as shown in diagram.
4. Remove plastic screw in the front of the wheel well using a flat-head screw driver to pry it out.

## 6. FRONT FLARE - FLARE INSTALLATION



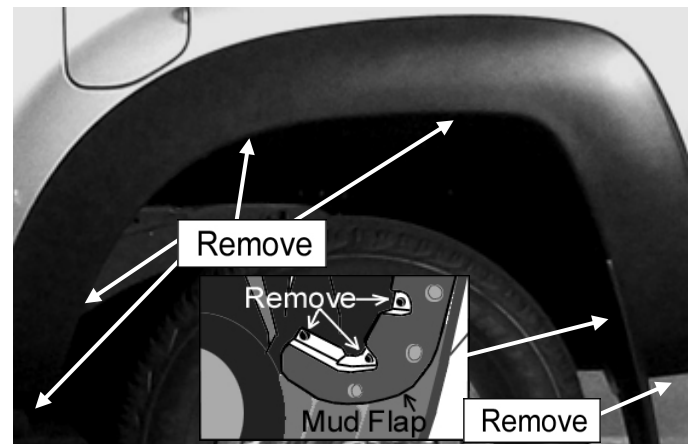
1. Connect the main front flare with the bumper flare using 2 hex screws and nuts.
2. With a helper, hold the flare firmly in place on the vehicle, adjusting as necessary to achieve a flush, proper fit.
3. Using the existing holes in the flare, mark 4 s-clip locations as shown in the diagram. Remove flare from vehicle.
4. Apply 4 s-clips over the 4 marks made in the previous step.
5. Again, place the flare on the vehicle in the proper location and install 4 machine screws through the flare and into the previously mounted s-clips.

## 7. FRONT FLARE - FLARE INSTALLATION (CONT.)



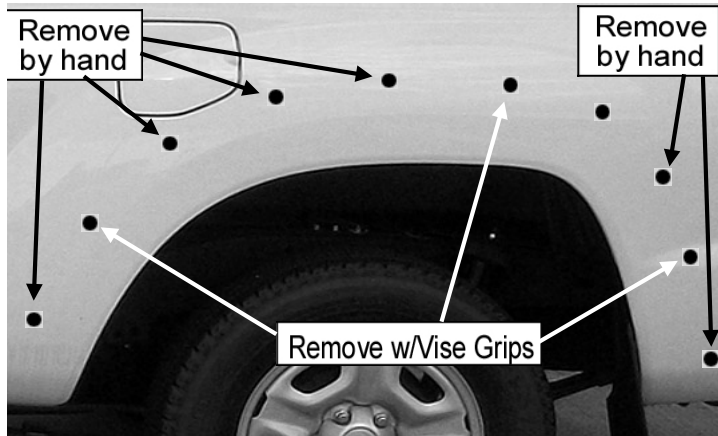
1. Re-install 4 OE screws as shown in diagram.
2. Use 2 supplied self-tapping screws where needed for added security on the inside lip of bumper flare piece.
3. Install supplied 50mm truss screw through the existing hole in the bottom of the bumper flare, through the 26mm spacer and into the existing OE hole.
4. Repeat steps 3-7 on front passenger side.

## 8. REAR FLARE - OE FLARE REMOVAL (DRIVER)



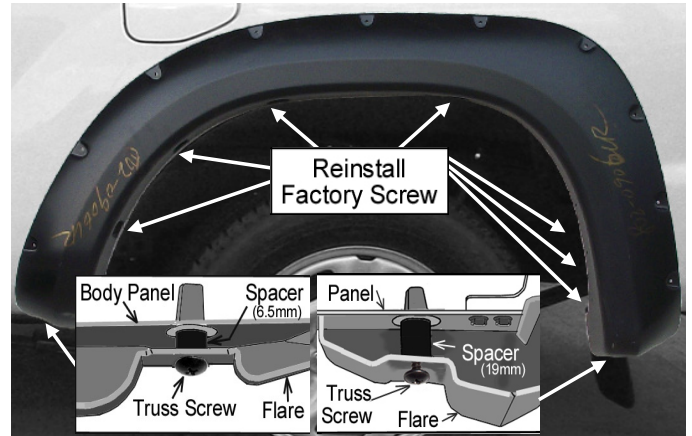
1. Remove 3 existing screws from the mud flap and save for re-installation. Discard mud flap. (Universal mud flaps may be used with flares)
2. Remove 5 existing screws as shown in the diagram and save for re-installation.
3. Pull the OE flare away from the vehicle.

## 9. REAR FLARE - EXISTING HARDWARE REMOVAL



1. Remove 7 OE clips from fender by hand.
2. Remove 3 OE clips from fender with vise grips as shown in the diagram.

## 10. REAR FLARE - FLARE INSTALLATION



1. Using a helper, mount and hold flare firmly in place.
2. Re-install 7 OE screws through the flare and into original holes.
3. Install supplied 20mm truss screw through the flare, through the 6.5mm spacer and into existing hole on the bottom of the front end of the flare as shown in the bottom left diagram.
4. Install supplied 50mm truss screw through the flare, through the 19mm spacer and into existing hole on the bottom of the rear end of the flare as shown in the bottom right diagram.
5. Repeat steps 8-10 on rear passenger side.

## 11. FINAL INSPECTION

1. Due to the tolerances allowed by the motor companies during assembly of the vehicle, adjustments may be necessary to work out any gaps that may occur and ensure a proper, flush fit.
2. Supplied self-tapping screws may be inserted in any location that is in need of additional support. With a helper holding the flare flush against the fender of the truck, insert self-tapping screws through the inner lip of the flare and into fender well wall. Repeat as needed.
3. Check rubber weather seal to ensure a proper seat. Make sure that the top edge of the rubber weather seal is not folded under, behind the flare at any point.
4. If needed, use the supplied seal tool (hooked edge) to properly seat the seal, sliding it along the weather trimmed edge of the flare.