



# RDJ Trucks PRO-OFFROAD Bolt-On Style Fender Flares RDJ Trucks PRO-X-TEND Style Fender Flares

Installation Instructions - Toyota Tundra 2007-2013

Part# 10-6015S / 10-6015T (PRO-OFFROAD Smooth/Textured Finish)

Part# 25-6015S / 25-6015T (X-TEND Smooth/Textured Finish)

## \*\*\*ATTENTION\*\*\*ATTENTION\*\*\*ATTENTION\*\*\*

### YOU MUST READ THE FOLLOWING POINTS BEFORE PROCEEDING WITH ANY STEP OF INSTALLATION

1. Inspect your fender flares for shipping damage immediately upon receipt. Shipping damage must be reported within 48 hours of receipt.
2. Test fit all flare pieces to your vehicle before beginning any other step to confirm you have received the correct set of fender flares for your application. Ensure that all pieces in the parts list below are present.
3. While professional installation is always recommended, RDJ Trucks fender flares can be installed by handy individuals with the proper tools. However, it is a 2-man job. Attempting to achieve a proper fit on one's own is highly discouraged.
3. Due to the tolerances allowed by the motor companies during the assembly of the vehicles, some adjustments or modifications may be necessary to achieve a proper fit.
4. PAINTING - All inspections and test fittings must be made prior to painting the fender flares. No claim of damage, fitment or other defects/errors may be made after painting has occurred. RDJ Trucks is not liable for any costs incurred from painting and/or associated labor.
5. Most importantly, we know that when it comes to choosing fender flares for your truck, you have a multitude of options. We are extremely grateful that you put your faith in our small company. If you experience any issues or if there is anything we can do to assist you, please don't hesitate to contact us - [info@rdjtrucks.com](mailto:info@rdjtrucks.com)

## PARTS LIST



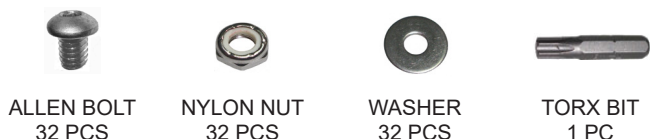
### FRONT HARDWARE



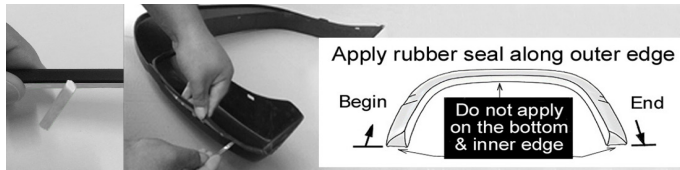
### REAR HARDWARE



### DECORATIVE POCKET HARDWARE



## 1. RUBBER WEATHER SEAL APPLICATION

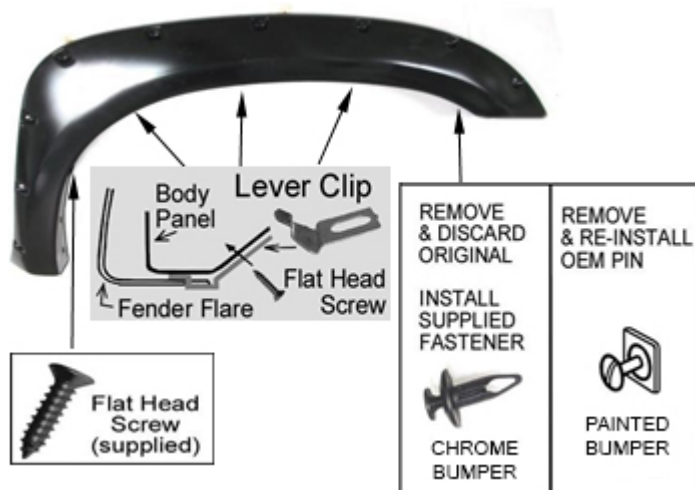


1. Thoroughly clean inside top edge of each flare (where the 3M adhesive will touch) with an alcohol based cleaner.
2. Do not peel the red backing off of the 3M adhesive until instructed. Beginning with the first flare, apply the rubber weather seal in roughly 1 foot sections at a time. From the starting end, leave an extra 1 inch of trim off of the end of the flare so that you can grab and peel the red adhesive backing.
3. With roughly 1 foot of trim applied to the edge, peel the red adhesive backing, pulling it out a few inches at a time. At the same time, press trim firmly in place, ensuring that it is securely adhered to the edge of the flare.
4. Continue the same process in 1 foot sections until the trim is firmly adhered to the entire outer edge of the flare. With a razor knife, cut off the excess trim from each end of the flare.
5. Repeat process for remaining flares.

## 3. FRONT - FACTORY MUD FLAPS (IF APPLICABLE)

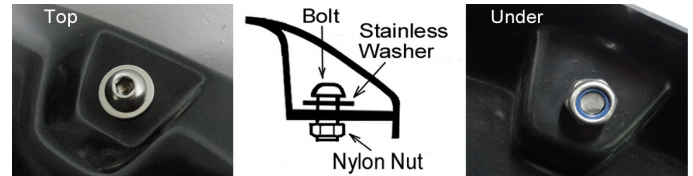
1. For models WITH factory mud flaps, remove 2 factory screws securing mud flap, retain for later use.
2. Remove mud flap and retain for installation later.

## 4. FRONT FLARE - INSTALLATION



1. Remove and/or re-install the factory screw or pin for your style of bumper as shown.
2. Apply 3 lever clips in the mounting slot on the flare and secure it to the vehicle with flat head screws as shown.
3. Fasten 1 flat head screw into rear location, through flare and into fender well as shown.

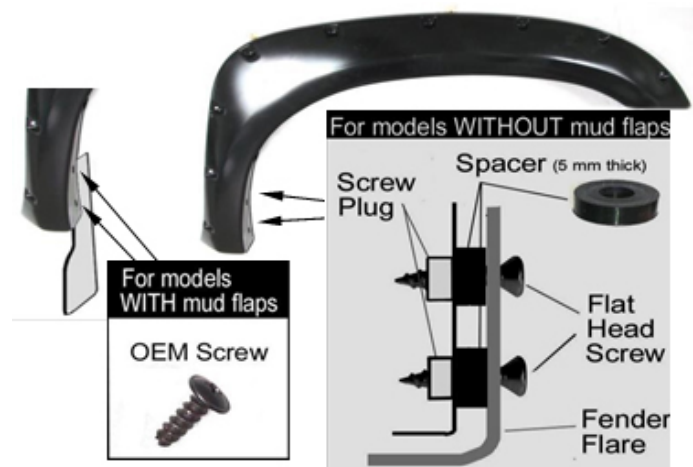
## 2. POCKET BOLT APPLICATION



\*SKIP THIS STEP FOR X-TEND SERIES FLARES

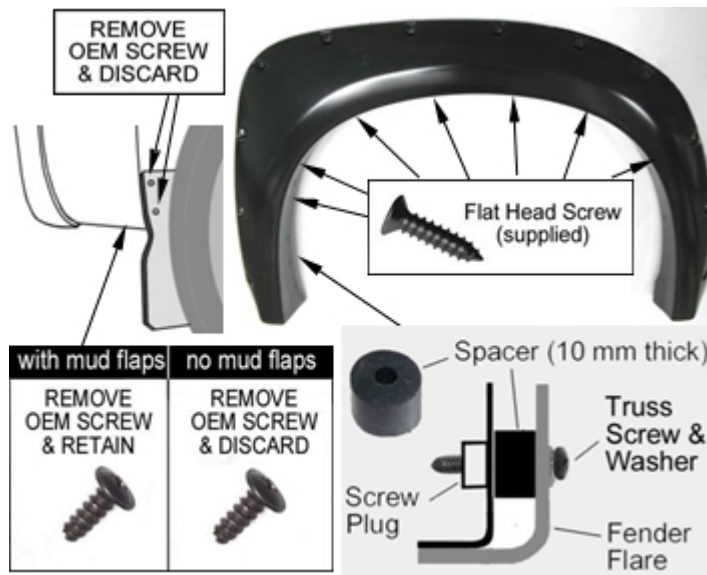
1. Apply washer to allen bolt and insert allen bolt into each pocket hole. \*NOTE: Washer should be on the outside of the flare underneath the allen bolt head, NOT on the backside under the nylon nut.
2. Apply nylon nut to allen bolt and tighten carefully. Do not overtighten.
3. Repeat for each pocket.

## 5. FRONT FLARE - INSTALLATION



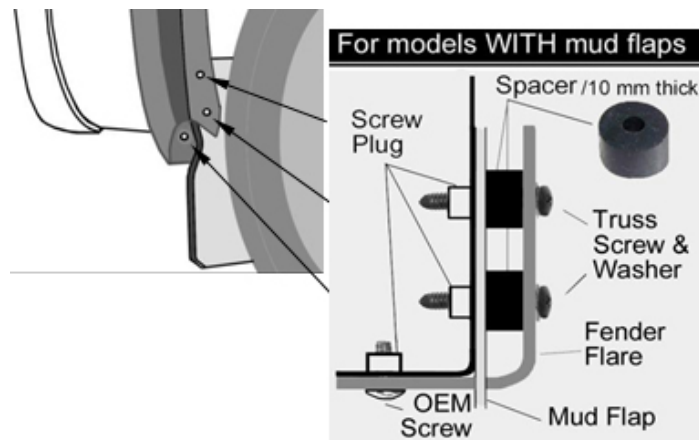
1. For models WITH mud flaps, insert mud flap behind fender flare, aligning with holes in fender well and fender flare and re-install 2 factory screws removed in step 3.
2. For models WITHOUT factory mud flaps, insert the supplied 5mm spacer in between the vehicle and the fender flare and secure with 2 flat head screws.

## 6. REAR FLARE - INSTALLATION



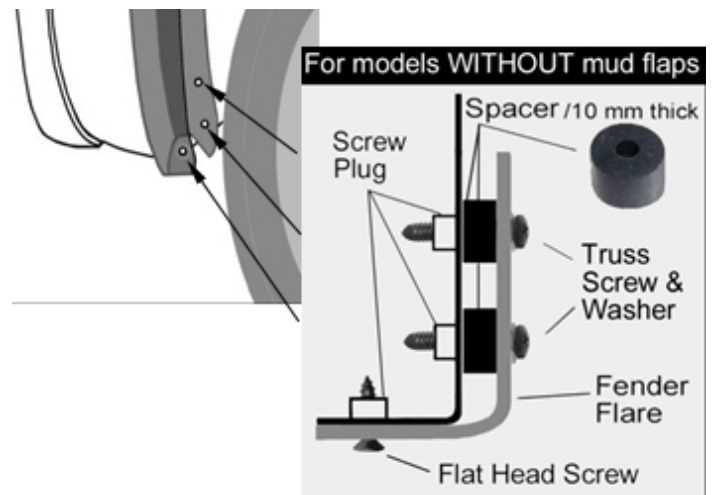
1. For models WITH mud flaps, remove the 2 factory screws from the mud flap and discard. Also remove the screw from the underside of the body and retain for later installation.
2. With a helper, firmly hold the flare in position against the fender of the truck aligning the mounting holes in the flare with the holes in the fender well. Insert flat head screws through holes 1-7 (front to back) to secure the flare to the fender of the truck.
3. Aligning with the 8th hole (front to back), insert a 10mm spacer between the fender flare and the body and secure with a truss screw and washer.

## 7. REAR FLARE - INSTALLATION WITH MUD FLAP



1. For models WITH mud flaps, replace the mud flap behind the fender flare and insert 2 10mm spacers, aligning with the original mounting holes for the mud flaps. Use 2 truss screws with washers to secure through the flare, through the spacers and into the original mounting holes in the truck. Re-insert the original screw saved in the previous step.

## 8. REAR FLARE - INSTALLATION WITHOUT MUD FLAP



1. For models WITHOUT mud flaps, insert 2 10mm spacers, aligning with the original mounting holes for the mud flaps. Use 2 truss screws with washers to secure through the flare, through the spacers and into the original mounting holes in the truck. Secure the bottom of the flare by inserting a flat head screw as shown.

## 9. FINAL INSPECTION

1. Due to the tolerances allowed by the motor companies during assembly of the vehicle, adjustments may be necessary to work out any gaps that may occur and ensure a proper, flush fit.
2. Supplied self-tapping screws may be inserted in any location that is in need of additional support. With a helper holding the flare flush against the fender of the truck, insert self-tapping screws through the inner lip of the flare and into fender well wall. Repeat as needed.
3. Check rubber weather seal to ensure a proper seat. Make sure that the top edge of the rubber weather seal is not folded under, behind the flare at any point. If necessary, use the seal tool properly seat the rubber weather seal.